

IMPACT OF CCM® THERAPY ON LV FUNCTIONS

Effect of Cardiac Contractility Modulation Therapy on Reverse Remodeling in Heart Failure Patients with LVEF 25–45% – Dr. Rami Kahwash

CCM POST-APPROVAL STUDY (PAS) NCT03970343

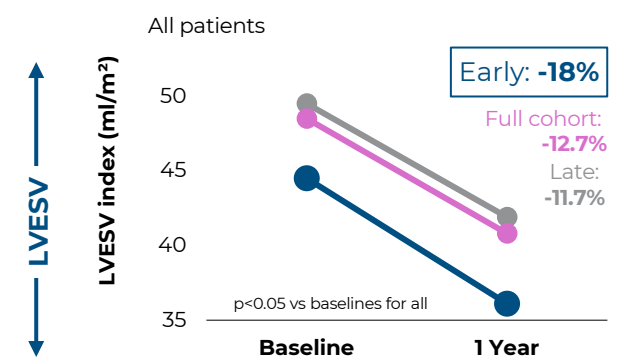
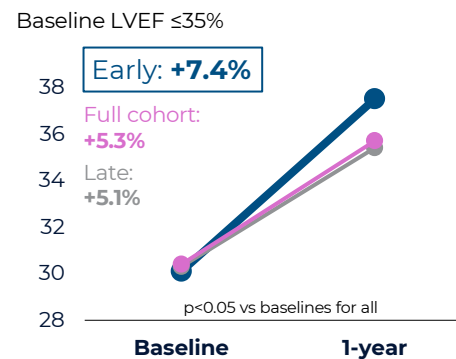
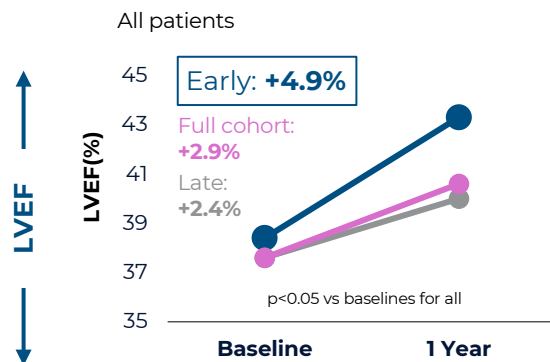
219 patients
NYHA III, LVEF 25-45%

48 US sites

Early CCM® intervention improved LVEF & LVESV

5-7%
LVEF

18%
LVESV



Early: ≤ 18 months from heart failure diagnosis; **Late:** > 18 months from heart failure diagnosis.

CCM[®] is FDA INDICATED TO



Improve
functional status



Improve **6-minute**
hall walk distance



Improve
quality of life

For NYHA Class III heart failure patients who...



Have a LVEF
(left ventricular
ejection fraction)
from 25% to 45%

AND



Remain **symptomatic**
despite GDMT
(guideline directed
medical therapy)

AND



Are **not receiving**
CRT (Cardiac
Resynchronization
Therapy)

DISCLAIMERS/IMPORTANT INFORMATION:

These materials are intended to describe common clinical considerations and procedural steps for the use of referenced technologies but may not be appropriate for every patient or case. Decisions surrounding patient care depend on the physician's professional judgment in consideration of all available information for the individual case. Impulse Dynamics does not promote or encourage the use of its devices outside their approved labeling. This presentation, including images, cannot be reproduced in any form without permission from the author. Case studies are not necessarily representative of clinical outcomes in all cases as individual results may vary. This presentation is being provided as educational purposes only.