

# Real-world survival of CCM<sup>®</sup> vs. CRT

Authors: Andrew J. Sauer, MD; Ryan Hass; Gary Cranke; Daniel Burkhoff, MD; Ishu Rao, MD

Title: **Real-world survival comparison of symptomatic patients with heart failure treated with cardiac contractility modulation (CCM<sup>®</sup>) vs. CRT**

Presented at THT, Boston, MA February 13, 2025

## Study Objectives



What is the observed real-world survival for **CCM<sup>®</sup>** patients and how does that benchmark against CRT

## Study Design

Retrospective analysis using **Truveta<sup>™</sup>** real-world database



**900** hospitals



**20k** clinics



**120M +** US patients

**Truveta<sup>™</sup>** real-world database was **successfully validated** for analysis as demonstrated by comparable results in CRT populations for Truveta<sup>™</sup> (**71%**) and CARE-HF (**77%**) when analyzing real-world survival rates

## Inclusion Criteria

**CCM<sup>®</sup>** and CRT HF populations from the Truveta<sup>™</sup> database between Jan 2016 - Dec 2024

n (**CCM<sup>®</sup>**) = 494

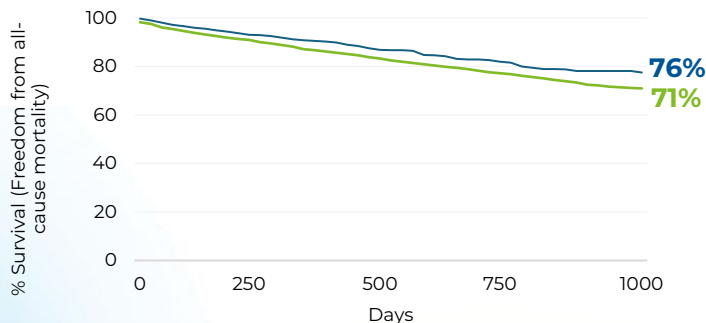
n (CRT[NYHA III]) = 6159

## Results

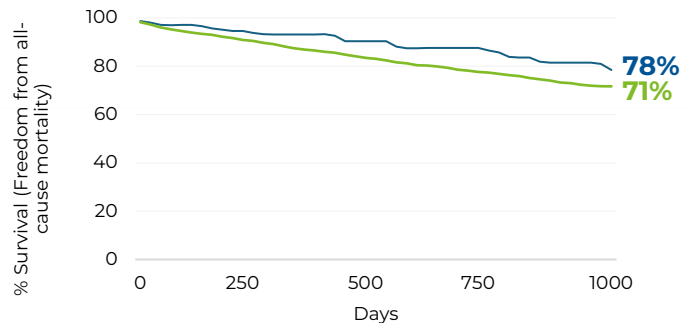
— **CCM<sup>®</sup>** — CRT

### CCM and CRT (NYHA III) Survival (Kaplan-Meier estimates)

All subjects

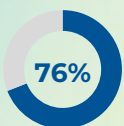


Subjects with documented LVEF 25-45%\*



\* Corresponds to current **CCM<sup>®</sup>** indication.

## Conclusions



**Real-world survival in patients with CCM<sup>®</sup> in Truveta<sup>™</sup> is 76% (1,000 days) and comparable to NYHA Class III patients who received CRT (in Truveta<sup>™</sup>)**



**In patients receiving CCM<sup>®</sup> with LVEF 25-45%, survival was 78% (1,000 days)**

Scan to learn more

