



QUICK START GUIDE FOR USING THE VESTA CHARGER

Vesta Charger System Components



Figure 1: Vesta Charger System Components

- **Vesta Charger** (with attached charging wand and charging wand cable clip) – used to charge your OPTIMIZER Smart Mini IPG.
- **AC Adapter** – used to charge the internal battery of the Vesta Charger.
- **E.U. / U.S. Plug Adapters** – plug adapters for the AC Adapter, allowing the AC Adapter to be connected to wall outlets in the E.U. and the U.S.
- **Carrying Case** – used to store and transport the Vesta Charger System.



QUICK START GUIDE FOR USING THE VESTA CHARGER

Connecting the AC Adapter to the Vesta Charger

1. Turn the Vesta Charger around so that the back of the charger is facing up.
2. Remove the protective cover flap from the power input connector located next to the base of the charging wand cable. **See Figure 2.**

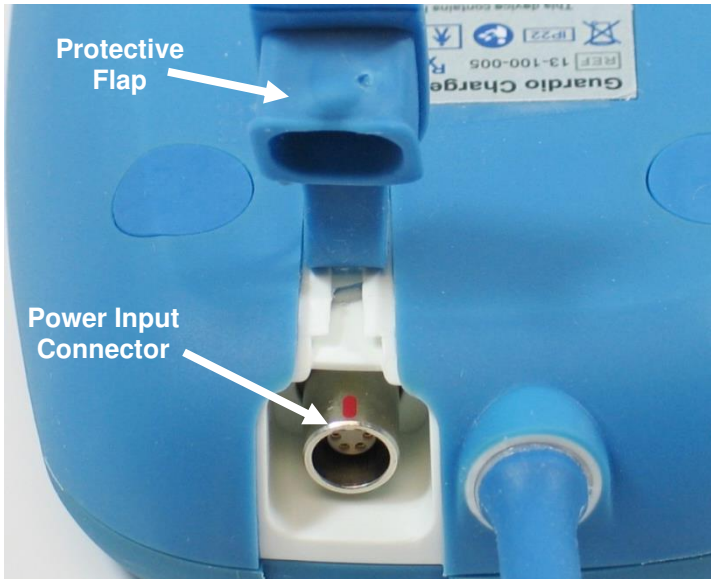


Figure 2: Back of the Charger



QUICK START GUIDE FOR USING THE VESTA CHARGER

3. Obtain the AC Adapter from the Carrying Case and rotate its DC output connector until the red dot on its connector is visible.
4. Line up the red dot on the DC output connector of the AC Adapter with the red line on the power input connector of the Vesta Charger (see **Figure 3**) and then insert the DC output connector into the power input connector.



Figure 3: Alignment of the DC Connectors



QUICK START GUIDE FOR USING THE VESTA CHARGER

Charging the Vesta Charger

1. Attach the location-specific Plug Adapter to the AC Adapter and then plug the AC Adapter into the wall outlet to begin charging the internal battery of the Vesta Charger.
2. When the Charger Self-Charge Success screen is displayed on the Vesta Charger (see **Figure 4**), the Vesta Charger battery is fully charged, as indicated by the checkmark above the charge level indicator in the center of the screen.



Figure 4: Charger Self-Charge Success Screen

Disconnecting the AC Adapter from the Vesta Charger

1. Unplug the AC Adapter from the wall outlet.
2. Hold and pull back on the metal sleeve of the DC output connector to disconnect the connector from the Vesta Charger. **See Figure 5.**

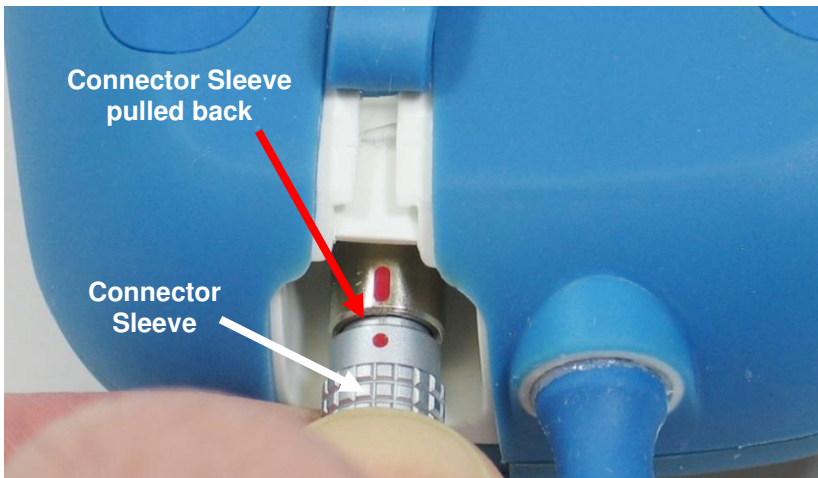


Figure 5: Close-up of the Connector Sleeve

3. Replace the protective cover flap over the power input connector of the Vesta Charger.



QUICK START GUIDE FOR USING THE VESTA CHARGER

Charging Your OPTIMIZER Smart Mini IPG

1. Assume a stationary, comfortable sitting position, ideally reclining at a 45° angle (such as on a sofa or armchair).
2. Determine the location of your OPTIMIZER Smart Mini IPG (typically right upper chest area). Drape the wand cable around your neck and then place the flat side of the Vesta charging wand (the side with the four blue rubber screw covers) directly over your OPTIMIZER Smart Mini IPG implant site (over your clothes). To prevent the charging wand from becoming displaced while charging your OPTIMIZER Smart Mini IPG, you may attach the charging wand cable clip to your clothing.
3. Start the charging process by pressing the **Power Button**, holding the button down for 1-2 seconds, and then releasing it. **See Figure 6.**



Figure 6: Pressing the Power Button on the Charger



QUICK START GUIDE FOR USING THE VESTA CHARGER

- The IPG Data Download screen will be displayed as the Vesta Charger downloads information from your OPTIMIZER Smart Mini IPG. **See Figure 7.**

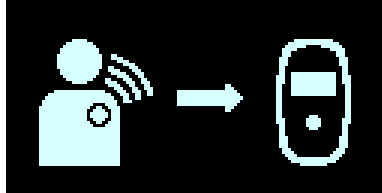


Figure 7: IPG Data Download Screen

- When the data download has been successfully completed, the Vesta Charger will display the IPG Data Download Success screen accompanied by 3 short beeping tones. The flashing checkmark indicates that your Vesta Charger was able to successfully able to download information from your implanted device. **See Figure 8.**

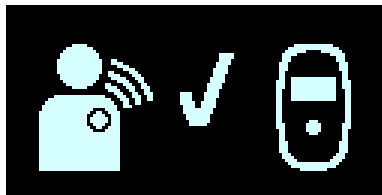



Figure 8: IPG Data Download Success Screen

- After the data download, the Vesta Charger will display the Charging IPG Status screen, indicating that the Vesta Charger has begun actively charging your OPTIMIZER Smart Mini IPG. **See Figure 9.**

The Coupling Level icon () at the center of the Charging IPG Status screen will show anywhere from zero to four illuminated bars. Reposition the charging wand until at least two bars of the Coupling Level icon are illuminated.

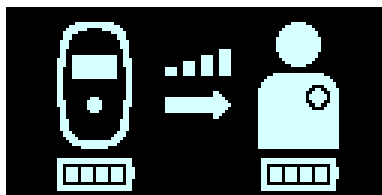


Figure 9: Charging IPG Status Screen



QUICK START GUIDE FOR USING THE VESTA CHARGER

- The number of bars at the bottom of the Charging IPG Battery icon (icon image on the right) depicts the current charge level of the battery in your OPTIMIZER Smart Mini IPG. See Table 1.



Table 1: OPTIMIZER Smart Mini IPG Battery Charge Levels

IPG Battery Icon	IPG Battery Charge Level
1 flashing bar	Below 25%
2 bars, last one flashing	Between 25% and 50%
3 bars, last one flashing	Between 50% and 75%
4 bars, last one flashing	Above 75%

- The Charging IPG Status screen will continue to be displayed as your OPTIMIZER Smart Mini IPG is being charged.
- When the battery of your OPTIMIZER Smart Mini IPG is fully charged, the Vesta Charger will emit three short beeping tones and display the IPG Charging Successfully Completed screen, indicated by the flashing checkmark in the center of the screen (see Figure 10). The Vesta Charger will then shut off automatically.

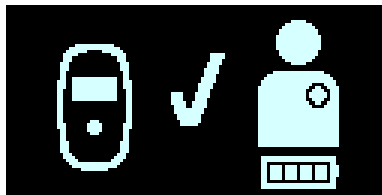


Figure 10: IPG Charging Successfully Completed Screen

- Detach the charging wand cable clip from your clothing (if necessary), then remove the Vesta charging wand from your implant site and undrape the wand cable from around your neck.
- Reconnect the AC Adapter to your Vesta Charger.



QUICK START GUIDE FOR USING THE VESTA CHARGER

Understanding Alerts

If a Direct Action Alert such as the one shown in **Figure 11** is displayed by the Vesta Charger accompanied by a beeping tone, attempt to charge your implanted OPTIMIZER Smart Mini IPG using the Vesta Charger.

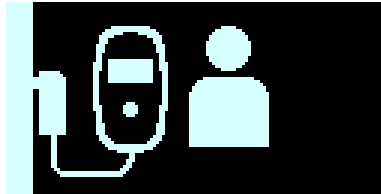


Figure 11: Long Time Without Downloading Data From IPG Alert Screen

If a Call Doctor Alert Screen, with a flashing exclamation point at the center of the screen and a Call Doctor Code (preceded by a letter denoting the IPG model code) such as the one shown in **Figure 12** is displayed by the Vesta Charger, followed by the Snooze Buzzer or Snooze Alert screen (see **Figures 13 and 14**), take note of the code displayed by your charger and then press the **Power Button** on the Vesta Charger to snooze the activated alert. Afterwards, please call the 24-hour Support Hotline (1-855-246-4437) and inform them of the alert code displayed on the Vesta Charger.



Figure 12: Example of Call Doctor Alert Screen

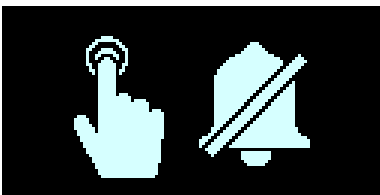


Figure 13: Snooze Buzzer Alert Screen



Figure 14: Snooze Alert Screen